



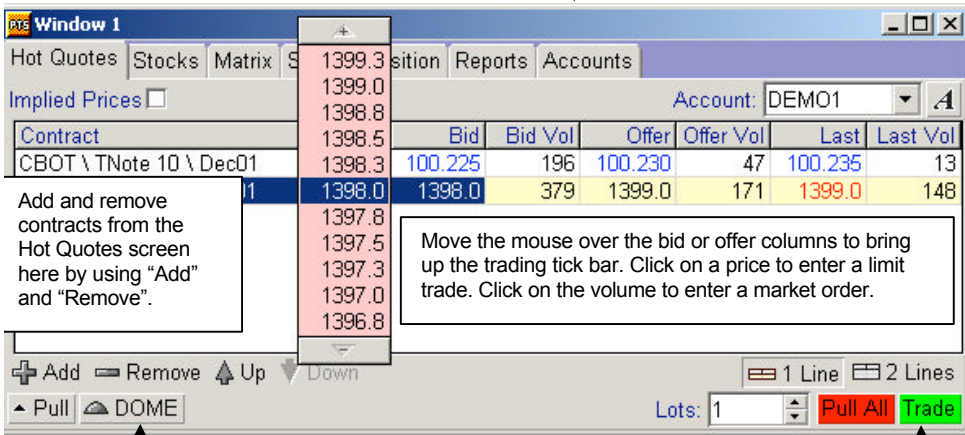
Enter username and password, click "Reset" and then "Login" to access pats



The traffic lights show green if you are connected and amber/red if there is a problem linking to pats

Open new windows using "New", arrange them using "Tile Horizontal" and "Tile Vertical".

Configure J-trader using the "Settings" button.



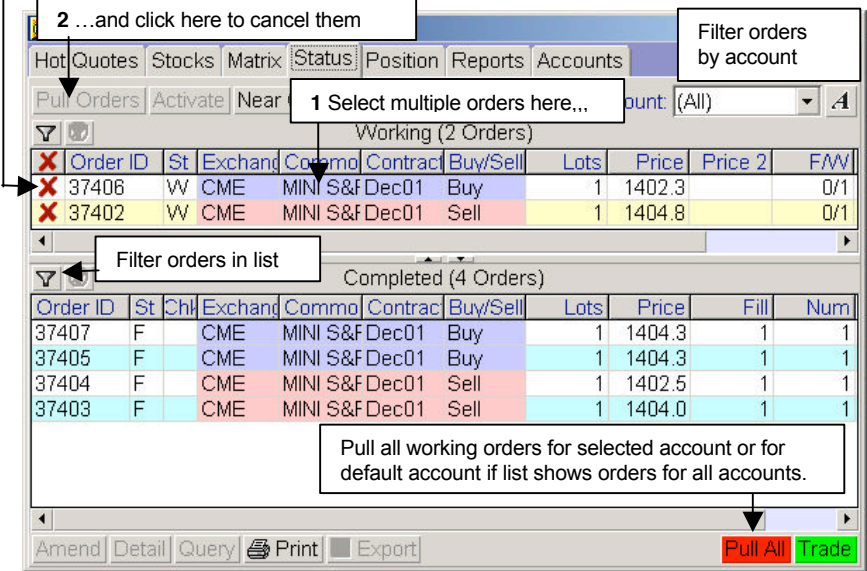
Add and remove contracts from the Hot Quotes screen here by using "Add" and "Remove".

Move the mouse over the bid or offer columns to bring up the trading tick bar. Click on a price to enter a limit trade. Click on the volume to enter a market order.

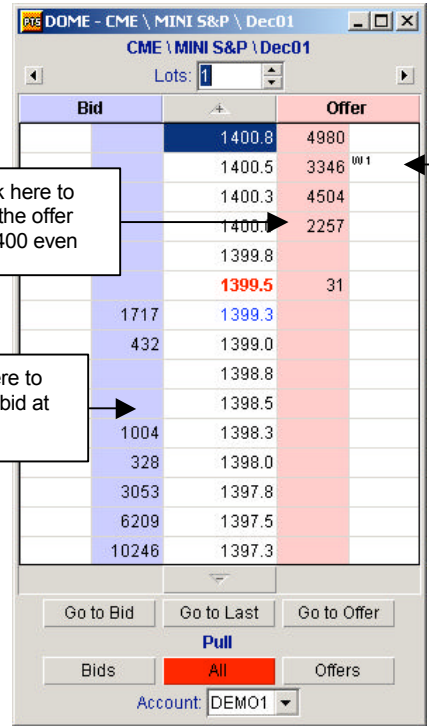
Click to start the Depth of Market Executor.

Click to open a Trade Ticket

One-click cancel an order



Pull all working orders for selected account or for default account if list shows orders for all accounts.



Summary of orders at working at 1400.5 - click here to pull all orders working at that price

Last traded price shown in bold.